

COMMITTEE:	Partnership and Regeneration Scrutiny Committee
DATE:	25 September 2014
REPORT TITLE:	Cymunedau yn Gyntaf Môn Communities First Progress Report
AUTHOR:	Jenny Whiston, Grants Manager
Head of Service	Shan Lloyd Williams, Head of Housing Services
PORTFOLIO HOLDER:	Councillor Kenneth P Hughes
CORPORATE DIRECTOR:	Gwen Carrington, Director of Community Department
PURPOSE OF THE REPORT:	To inform Members of progress with the implementation of Communities First Programme in Anglesey

Background

Communities First [CF] was introduced in Wales in 2001 by the Welsh Assembly Government [WAG] as their flagship programme to improve the living conditions and prospects of people living in the most disadvantaged communities across Wales. It is now one of the main Tackling Poverty Programmes of the Welsh Government.

The Authority is the Lead Delivery Body for £1.658M worth of funding for the period 1.2.2013 to 31.3.2015, whilst Môn Communities First Ltd, a company limited by guarantee and a registered charity, is the Delivery Organisation. As the Lead Delivery Body [LDB], the Authority 'has the overall responsibility for ensuring good governance and accountability throughout the operations of the Cluster. A Legal Agreement is in place between the Authority and Môn Communities First Ltd for the delivery of the Programme. A breakdown of expenditure for 13/14 and 14/15 budget can be seen in Appendix 1.

The Programme started on 1st February 2013 and will run to 31st March 2015 under the current funding. Extension funding to take the programme to 31st March 2016 is currently being developed with a view to submitting by 19th September. Communities First has a geographical focus, concentrating on the 10% most deprived communities on the island. The area covered consists of seven Lower super output areas [LSOA's] of Morawelon, Porthyfelin 1, Holyhead Town, Maeshyfyrd, London Road and Kingsland in Holyhead as well as Tudur in Llangefni. Four of these LSOA's rank in the 10% most deprived wards in one or more of the Communities First priority Welsh Index of Multiple Deprivation [WIMD] domains and all LSOA's rank within the most deprived 20% overall.

The Môn Communities First programme focuses on 3 main outcome areas. These are:

- Prosperous communities

- Learning communities
- Healthier communities

WG has developed an Outcomes Framework for monitoring progress in delivering the new Programme, using the Results-based accountability methodology and is currently trying to align the Outcomes Framework with those of Families First and Flying Start which are the other two WG tackling poverty programmes. There is also a Community Involvement Plan to enable community involvement.

Communities First Progress

Communities First has developed rapidly over the last 18 months and there have been increases in both the number of staff that the organisation currently employs and the amount of funding that has been secured. On 1st February 25 existing staff from the former Communities First Partnerships were transferred to Môn Communities First Ltd under the Transfer of Undertakings (Protection of Employment) Regulations. A restructure took place following a period of consultation. Voluntary redundancy was offered to staff and was taken up by a number of staff which meant that no compulsory redundancies had to be made, 17 staff remained. Currently 30 staff are employed and the company's turnover for 13/14 was just over £1M (see Appendix 2).

Môn Communities First Ltd is managed by a voluntary Board of Directors and the Board also includes observer representation from the Portfolio Holder for Housing and Social Services and Officers.

As a company limited by guarantee and a charity, the organisation has the ability to secure additional external funding to support the delivery of Communities First services in the area which the Authority as a public body may not have been eligible to apply for. They have been very successful in securing an additional £467K from a number of sources to support CF delivery during 2013/14 (see Appendix 3).

Môn Communities First was chosen as the only Cluster in North Wales to pilot a Workless Households scheme, now called LIFT. The scheme will provide £228K funding to March 2015 to specifically target and work with households where adults have been out of work for 6 months or more with a view to getting them back into work, work experience or training. To date LIFT has moved 32 people from long term unemployment into employment and is the leading cluster in Wales.

The Community Vocational Academy has gone from strength to strength and can now provide accredited training to people aged 14-64 targeting those who are least likely to attend mainstream college provision. It provides the opportunity for hands on training in the environmental, construction, retail, administration, childcare and hospitality sectors based within a disciplined work environment and providing one to one mentoring to build confidence and skills.

Môn Communities First is working very closely with employers to ensure that the vacancies they have can be matched to the participants at the Academy. The training is provided to ensure that the participants become job ready and can move from the Academy straight into

employment. Ongoing support is provided to the participant to ensure that the employment remains sustainable.

Financial Inclusion continues to be an important area of work with the referrals to 'Pantri Pobl' the food bank reaching an all-time high during August 2014, with over 1,000 meals being provided. More and more people including both those on benefits and working people with families are struggling to find enough money to buy food. Communities First is actively working with the schools to help to improve the financial literacy of children. They are also working hard to promote the take up of the North Wales Credit Union service so that people can have access to affordable finance instead of pay day loans.

The decision on a major Health Lottery bid is currently awaited which will provide £230K to deliver various initiatives including a range of activities for young people.

A summary of key performance measures can be seen in Appendix 4

Môn Communities First Advisory Board

In May 2013 the Authority established an Advisory Board consisting of representatives of the Authority and other organisations. The Terms of Reference of the Group is to facilitate a close working relationship between Môn Communities First Ltd and key service providers. The purpose of the Advisory Group is to:

1. To provide opportunities for the provision of mutual support, problem solving, good practice and information sharing for Môn CF by partners, taking full account of the needs of local communities and families.
2. To act as the link between the Local Service Board and Single Integrated Plan and other key strategic documents and programmes.
3. To align programmes locally, such as Môn CF and Families First and other programmes and activities on Anglesey and identify opportunities for joint commissioning, bidding and programme bending.
4. To act as a discussion forum, to review and develop Môn CF annual delivery plan and to influence the LSB and other partners to adopt the organisation's proposals.

The Advisory Board has recently taken up the challenge of trying to improve the service availability of the North Wales Credit Union on Anglesey.

Recommendations

Members of the Regeneration and Partnerships Scrutiny Committee are requested to:

Note the contents of the Report.

Report Author: Jenny Whiston, Grants Manager

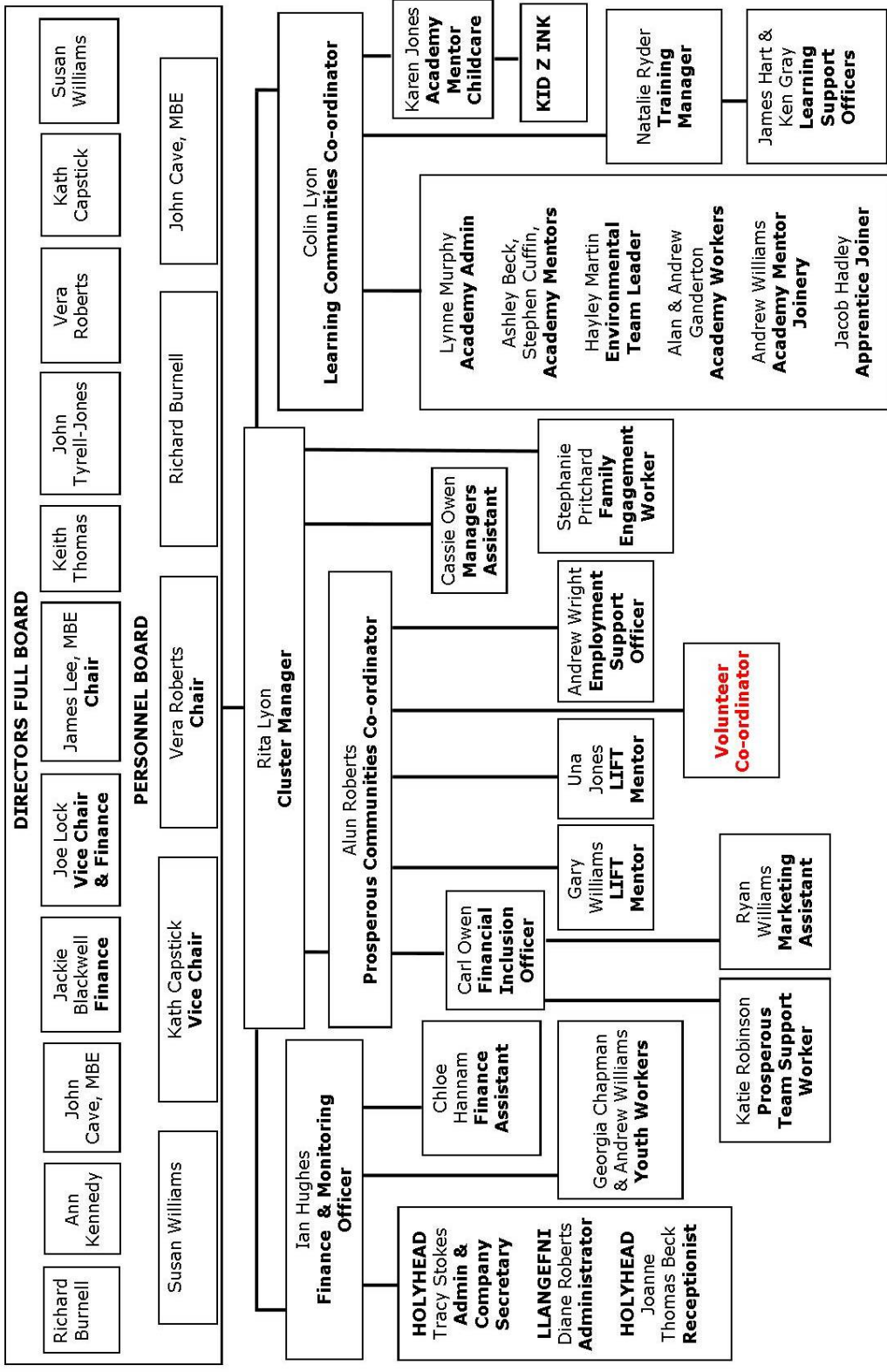
Report date: 9th September 2014.

Communities First Funding

	13/14 Actual Expenditure £	14/15 Budget £
Salaries	439,657	555,874
Management Charges	19,057	23,643
Travel & Subsistence	6,257	16,684
Training	2,817	5,100
Premises Costs	94,004	65,327
Community Involvement Plan	23,346	25,000
Project Costs	59,485	105,530
LDB Costs	18,535	23,736
Total	663,158	820,894
Claimed	663,158	

ORGANISATION CHART

ORGANISATIONAL CHART



EXTERNAL FUNDING SECURED TO DATE

£60,000 Communities First Pupil Deprivation Grant – this project is focused on targeted literacy and numeracy support in Holyhead secondary school and some of its feeder primary schools. The support aims to target groups of vulnerable learners, many of whom are entitled to free school meals from an early age through to the end of their formal education. The focus looks at in-school support as well as out of school support through engaging and equipping parents to play an active part in their child's learning. The parents are also referred onto other CF programs for support.

£20,000 Health Lottery – secured to hold local conversations (consultation) to ascertain CF residents' aspiration for their community. A bid based on the outcome of this has been submitted for £230,000 which includes a range of activities for young people.

£9,000 Community Safety – has been secured to deliver diversionary activities for teenagers over the school holidays.

£150,000 MAGNOX – secured to set up a joinery workshop within the Vocational Academy and employ a Joiner Mentor to deliver the construction element of the Vocational Academy.

£25,000 Tackling Poverty Small Grants Fund – WG funding for distribution to community groups via a local application process.

£4000 Reaching Wider – to deliver community engagement/training.

Cyfenter

£41,000 has been secured to set up and run a "Shop in Town" scheme in Anglesey which aims to promote shopping in the town centres and supporting local businesses whilst providing a range of discounts and special offers for card holders.

£25,000 has been secured to refurbish the childcare centre Kid z Ink and extend the services offered, this project is linked to the Vocational Academy and all the childcare training is delivered here.

Môn a Menai

£70,000 (up to March 31st 2014) Empty Shop Initiative – completion of the project

£38,000 (up to 31st March 2014) Community Vocational Academy – end of funding source, contributed towards project costs

Anglesey Aluminium

£5000 towards supporting Pantri Pobl

£7000 towards rent and running costs of a charity shops which local groups use on a rota basis to raise funds for their good causes (managed by Môn CF)

£13,000 to purchase a Tipper Truck for the Academy

Communities First Performance Indicators

A full listing of all of the indicators which have to be reported to the Welsh Government via Ffynnon can be made available on request but a summary of key indicators are shown below.

Indicator	Target to Qu 4 13/14	Achieved to Qu 4 13/14
Prosperous Communities – Helping people to develop employment skills and find work		
No or people actively accessing advice and support	101	160
No of people entering employment	17	34
No. of people gaining an employment related qualification	8	6
Prosperous Communities – Reducing youth unemployment and disengagement		
No. of people volunteering regularly as a route to work	20	18
No. of people securing a Jobs Growth Wales Placement	5	14
No. of people gaining an employment related qualification	20	18
Prosperous Communities - Promoting digital inclusion		
No of people gaining basic IT skills	100	58
Prosperous Communities – Improving financial capability, managing debt and raising income		
No. of people opening a Credit Union account	84	183
No. of people accessing a Credit Union loan	20	100
No. of children with improved financial literacy/capability	100	271
Prosperous Communities – Supporting enterprise, time banking and building social capital		
No. of enterprises supported with start-up activity	12	9
No. of social enterprises started	1	2
Prosperous Communities – Reducing the risk of youth offending		

No. of young people engaged in regular positive activity	150	302
No. of young people gaining an extracurricular qualification	50	39
Learning Communities – Lifelong learning in communities		
No of people gaining a qualification	75	95
No of people who participate in volunteering to learn	5	15
Learning Communities – Improving adult life skills		
No. of people gaining a qualification	60	143
No. of people progressing on to further learning	15	12
Healthy Communities – Promoting physical wellbeing		
No. of people more aware of the risks of obesity	24	65
No. of people with a more positive attitude to improving their physical health	20	40
No. of people demonstrating increased physical activity	7	0
Healthy Communities – Encouraging healthy eating		
No. of young people eating fresh fruit and vegetables daily	150	150
Healthy Communities – Reducing risking behaviour		
No of young people with a better knowledge of the risks	10	33
LIFT cumulative total since start of programme 1st January 2014		
Vocational training		52
Work placements		33
Preparation for full time employment		27
Into employment		32